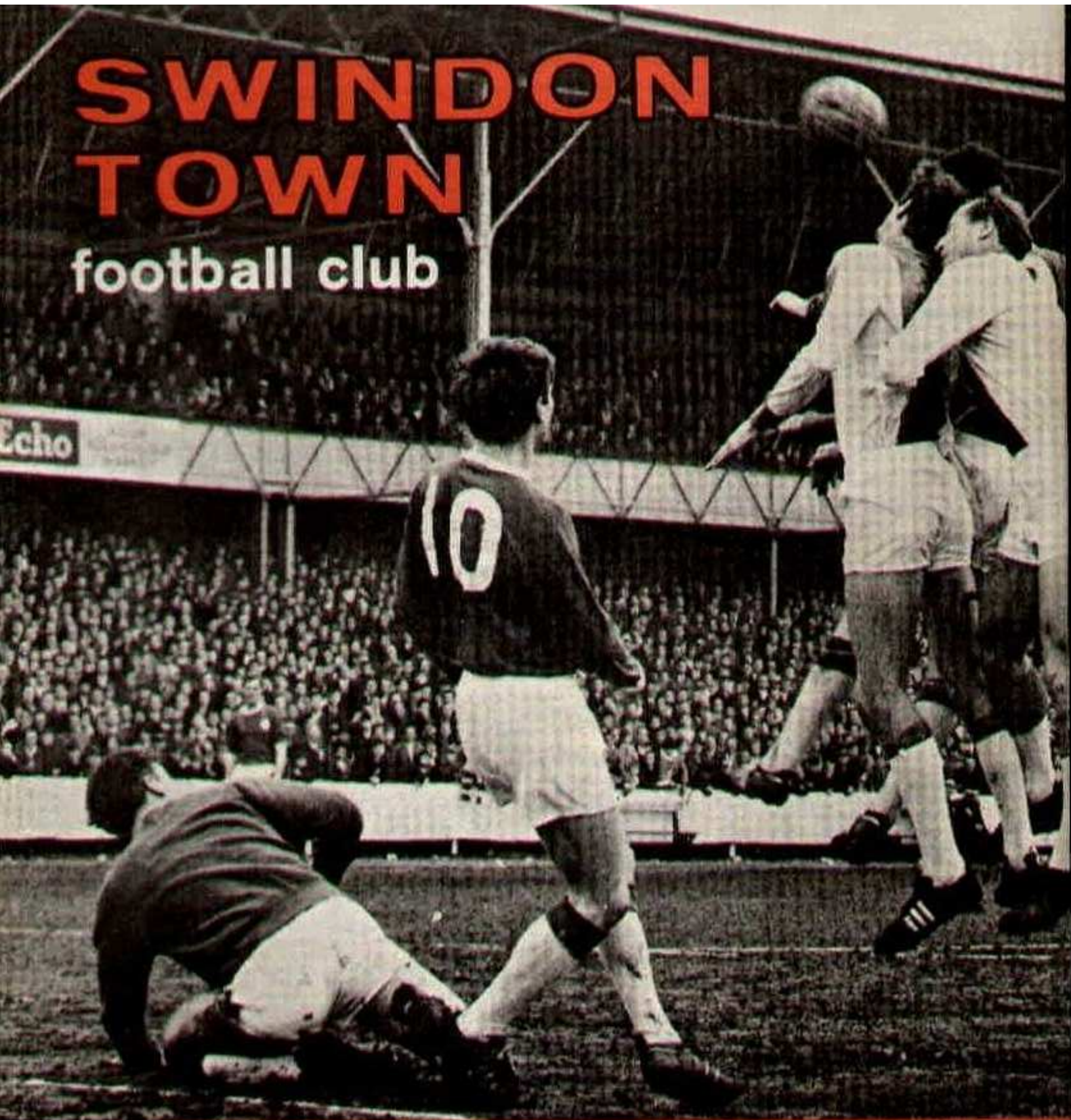


# SWINDON TOWN

football club

Echo



official programme 6d

For over 70 years we have been one of Swindon's leading house furnishers, offering a personal service. You cannot do better than to inspect our showrooms before making your final decision.

Contractors to

County and Borough Councils

Hospitals

Government Departments

Factories

Schools

We are open until 5.30 p.m. each evening and 1 p.m. on Wednesdays.

Telephone 5365/6

# **Mills & Merricks**

**LTD.**

**16-17 BRIDGE STREET, SWINDON**

# SWINDON TOWN FOOTBALL COMPANY LIMITED

Registered Office: COUNTY GROUND, SWINDON

## Directors:

Mr. W. J. CASTLE (Chairman)

Mr. H. E. LANE (Vice-Chairman)

Messrs. F. L. COLLINGS, A. W. DONE, M. EARLE, R. FRICKER, C. J. GREEN,  
F. PLYER, H. WILLIAMS and K. H. WILMER.

Manager: D. WILLIAMS.

Secretary: R. A. MORSE.

---

VOL. 17

SATURDAY, DECEMBER 3rd, 1966

No. 13

---

SATURDAY, DECEMBER 3rd, 1966

DIVISION III

# SWINDON TOWN v. OLDHAM ATHLETIC

Kick-off 3 p.m.

---

## REFEREE:

Mr. D. A. CORBETT (Essington)

## LINESMEN:

**Red Flag**—Mr. J. G. D. LEWIS (Port Talbot)

**Yellow Flag**—Mr. G. H. Thurston (Redditch)

For ALL forms of PRINTING—get in touch with the  
**BOROUGH PRESS SWINDON**

STATIONERY

MULTIPLE SETS

BUSINESS CARDS

LOOSELEAF LEDGERS

STATEMENTS

INVOICES

COLOUR WORK

TICKETS

POSTERS

LEAFLETS

BUSINESS FORMS

$\frac{b}{p}$

NOTEPAPER

LETTERHEADS

CATALOGUES

BROCHURES

BOOKS

SHOWCARDS

TECHNICAL LEAFLETS

DIE STAMPING

LABELS

MAGAZINES

WEDDING STATIONERY

Quality printing — delivered on time

Borough Press Swindon Limited, Eastcott Hill, Swindon

Suppliers to the Swindon Town Football Club

***Swindon Sports Centre***

SUPPORTERS SCARVES - RATTLES - Etc.

23 COMMERCIAL ROAD

Tel. 4270

# NEWS and VIEWS

We are safely through to the 2nd round of the F.A. Cup Competition, now to consolidate our league position, and then hope to win the next cup round and participate in the draw with clubs of the First and Second Division.

The result, 3—0 in our favour, was very good, but the game itself was most disappointing. There seemed little atmosphere, and there was certainly a lack of urgency about the play. We are afraid our supporters who made the long trip were not too happy with the display.

Whilst the end justified the means, our team seemed far too casual. Probably they were right, because they played well within themselves and let the opposition wear itself out, in so much that for the last fifteen minutes we were in complete control.

Undoubtedly the surface was uneven and the ground sticky and holding, but oh! so many of our passes went astray, and mistakes were in abundance.

However, the final result was the answer, and our progress continues. May we keep on the up-grade as today's game will be a far different proposition. Oldham Athletic occupy fourth position in the league table, and is considered to be a team well in the running for promotion.

Last season we played them at home on Easter Monday and, although our opponents were then in last but one place, the result was a win in their favour by one goal to nil. Swindon's team was Downsborough; Dawson, Trollope; Morgan, Nurse, Shergold; Weaver, Smart, Lawton, Brown, Rogers. Oldham Athletic: Swan; Ledger, Holden; Stevens, Asprey, Bowie; Towers, Blore, Large, Frizzel, Bartley. The goal was scored by Towers, the outside-right.

**Come Co-operative Shopping**



FOR  
THE BEST  
IN  
MEN'S  
WEAR

**SWINDON AND DISTRICT CO-OPERATIVE SOCIETY  
6 FLEET STREET, SWINDON**

## NEWS AND VIEWS—continued

The following day we travelled north, with a much changed team, and drew 1—1, and followed that up the following Saturday by winning 5—1 at Mansfield.

Oldham Athletic is making great efforts to win promotion to Division II, and have acquired several new players, including some known to our supporters. David Best, goalkeeper, from Bournemouth, and Frank Large, centre-forward, at one time on Swindon's books. They recently obtained the services of K. Bebbington, a right-winger from Stoke, and Knighton, a much sought after full-back from the Wolves.

They have added greatly to the amenities of the ground, and have built a treatment room for the injured players. Their present manager is Mr. Jimmy McIlroy, who played for Burnley, Stoke and Ireland. Many will recall his great games for his country. He occasionally plays in the first team. In fact he has already done so this season, but his appearances become fewer as he concentrates on his managerial duties.

Oldham Athletic has a fine ground at Boundary Park, capable of holding 50,000 spectators. The team plays in orange shirts and royal blue shorts, but our older supporters will remember them in blue and white halves and white shorts. We wonder sometimes why the old traditions are rejected. We know we must move with the times, but to many of the old, stripes, halves, quarters and rings meant much, and seemed to give a greater atmosphere than the continental all one plain colour.

Some present today will recall the stirring game against Oldham Athletic, which we won 2—0, in the 2nd round of the Cup in season 1923-24. We defeated Bradford in the 1st round, Crystal Palace in the 3rd round, and finally lost away to Burnley after a draw at Swindon.

Tel. Swindon 5884

**W. J. SELWOOD**

*Saddlery*

General Leather Goods Manufactured  
and Repaired to Your Individual  
Requirements

148a MANCHESTER ROAD  
SWINDON, WILTS.

Always at your service

**L. BIBBY**

For all Types—Rags, Iron and Metal,  
etc. Spot Cash Paid. Please Tel. 2101  
and our van will call.

THE PADDOCK, ERMIN STREET  
STRATTON ST. MARGARET

★ Cedarwood Sheds

★ Workshops and Greenhouses

Made locally by

**H. R. SPACKMAN**

SHRIVENHAM ROAD - SWINDON - WILTS.

Telephone Swindon 4458

**WISES CATERING  
SERVICE**

(Reg. Wise)

Our Caterer for the past 18 seasons  
Guarantees

A GOOD CUP OF TEA AT THE  
COUNTY GROUND

A full range of Sweets & Cigarettes  
at any of our five kiosks on your  
way in. ENJOY YOURSELF

**Warnes Rentals—**

*To be sure!*

51 Commercial Road,  
**SWINDON**

Tel: 6486



The team was: Randall; Dickenson, Weston; Cooper, Bew, Waring; Denyer, Crossley, Fleming, Johnson, Davis. Among the famous names in the Burnley team was Jerry Dawson, goalkeeper; "Ginger" Hill, centre-half; and the great Bob Kelly at inside-right. Some of us still retain thrilling memories of that season.

It was most unfortunate that our cup match clashed with the attractive Reserve team fixture against Tottenham (league leaders). Our opponents brought a very strong side, including players like, Henry, Posse, Saul, Clayton and Went, all of whom have appeared in the first team many times. Unfortunately we were weakened a little by illness, injuries, and demands of the senior side. However, our younger lads played with determination and spirit, and put up a great fight, but in the end had to admit to defeat to a better side. Many of the team played extremely well, but none tried harder than sixteen-year-old inside-right "Bill" Bailey. He just ran and ran, and at the final whistle hardly had enough energy to drag himself to the dressing room. We rather felt some of our supporters demanded too much of this young boy, only recently out of school, lacking experience, but certainly not "guts and effort".

We are sure our supporters were sorry to read a week ago that one of our ex-players, Brian Richardson (now captain of Rochdale), had sustained a badly damaged leg. Everyone sends him best wishes for a speedy recovery. A grand lad, and a great club man, we didn't see enough of him at Swindon to realise his worth. Popular with players, he was most helpful to the young boys. At his age, this injury could be a severe blow, but Brian, with his wonderful spirit, is sure to come back. We wish him well. Good luck!

Again we have been most fortunate in the F.A. Cup draw — Ashford Town at Swindon. Without being in any way conceited or boastful, surely we should proceed to Round 3!

# WILSONS (SWINDON) LTD.

BUILDERS OF MODERN ATTRACTIVE  
HOUSES AND BUNGALOWS

Enquiries to:

HEAD OFFICE: 90 COMMERCIAL ROAD, SWINDON 6361

SITE OFFICE: COVENTRY FARM ESTATE, WROUGHTON 271

SITE OFFICE: COLEVIEW ESTATE, STRATTON S.M. 314

## Maylott Studios

For GROUP & SPORT Photographs

Official Photographer to  
Swindon Town Football Club

31 FARINGDON ROAD

TEL. 22792

## Notton's Cafe

COUNTY ROAD

200 yards from Ground

RIGHT ON THE BALL

## L. Wollen

OFF LICENCE

WINES and SPIRITS

Arkell's Ales and Stout

373 Cricklade Rd., Swindon

Deliveries Daily

Phone 3508

## C. DUNN & SON

Builders & Decorators

Alterations, Renovations,  
Conversions, Plumbers &  
Sanitary Engineers

503 CRICKLADE RD. Tel. 22522

## W. COLLINS (Swindon) LTD.

TURF ACCOUNTANTS

69 COMMERCIAL ROAD - SWINDON

TEL. 21371

AND AT THE GREEN, LYNEHAM

# DIVISION III

(up to, and including, Tuesday, November 29th, 1966)

	P	W	D	L	F	A	Pts.
Queen's Park Rangers.....	18	11	5	2	53	20	27
Bristol Rovers .....	21	11	5	5	42	32	27
Mansfield Town .....	19	10	5	4	37	33	25
Oldham Athletic .....	19	11	2	6	43	22	24
Watford .....	18	8	6	4	23	15	22
Shrewsbury Town .....	19	9	4	6	33	27	22
Grimsby Town .....	18	9	3	6	28	27	21
Walsall .....	18	9	3	6	27	29	21
Gillingham .....	19	6	8	5	23	25	20
Peterborough United .....	18	6	7	5	30	25	19
Bournemouth & B.A. ....	18	8	3	7	20	25	19
Torquay United .....	20	7	4	9	31	28	18
Brighton & Hove Albion	18	7	4	7	26	24	18
Colchester United .....	18	7	4	7	34	34	18
Darlington .....	20	7	3	10	21	34	17
Reading .....	19	6	4	9	26	28	16
Middlesbrough .....	18	6	4	8	33	37	16
Doncaster Rovers .....	18	6	4	8	26	47	16
Oxford United .....	18	5	5	8	23	23	15
<b>Swindon Town</b> .....	<b>17</b>	<b>5</b>	<b>4</b>	<b>8</b>	<b>30</b>	<b>26</b>	<b>14</b>
Scunthorpe United .....	19	5	4	10	19	32	14
Workington .....	17	5	3	9	24	30	13
Leyton Orient .....	18	3	7	8	22	33	13
Swansea Town .....	19	2	5	12	28	46	9



# W. J. CASTLE

Office and Bakery:  
4 and 5 MARKET STREET

SWINDON

Telephone 22017

## Specialists—

BIRTHDAY CAKES - WEDDING CAKES  
DAIRY CREAM - PASTRIES  
BUNS - ROLLS - SPONGES

Do not let **CHILBLAINS** spoil a good game



## RELAPERNE

Price **2/6** from your CHEMIST

**2/10** Post Paid from

**BALLARD & CO. (CHEMISTS) LTD.**

**FARINGDON - BERKS**

# OUR VISITORS



## OLDHAM ATHLETIC

### **BILL ASPREY (Centre-half)**

Joined the staff from Stoke City last January, his only other club. Made more than 300 League appearances and was an ever-present in their 1962-63 Championship team.

### **DENIS STEVENS (Wing-half)**

Signed from Everton last December where he had two seasons of maximum League appearances. Gained a League championship medal with Everton and a 1958 F.A. Cup-winners medal with Bolton Wanderers.

### **BILLY DEARDEN (Inside-forward)**

The only local boy on the staff to have made the first-team mark. Started in the junior teams as an amateur, turned part-time and finally won his full-time status at the start of last season. Made his first-team debut against Peterborough United during 1964-65.

### **REG BLORE (Centre-forward)**

Signed from Blackburn Rovers last Christmas. Gained International Under-23 Cap against Scotland while playing for Fourth Division Southport. While at Southport scored 55 goals in 139 League outings. After only five League chances during two years with Blackburn Rovers was offered a chance to regain regular League spot with Oldham Athletic.

### **IAN TOWERS (Forward)**

Transferred from Burnley on New Year's Day after 9 years service at Turf Moor. Has been regular wing choice with Oldham Athletic, though injury robbed him of a few appearances in the final stages of last season.

### **BILLY JOHNSTON (Inside-forward)**

Signed last June from Irish League Club Glenavon. Has won all the honours available in Irish Football.

### **BOB LEDGER (Full-back)**

Transferred from Huddersfield Town during the 1962 summer. Signed for wing duties, but has now returned to defence.

**G. H. FLOWER & SON LIMITED**

WOOD LANE, CHIPPENHAM

LICENCE No. S.2802

PHONE 2017

## **SCRAP METAL**

and

**GENERAL WASTE SALVAGE DEALERS**

Plant dismantling carried out

Members of  
**National Association of Non-Ferrous Metal Merchants**

## **THE PORK SHOP**

(Swindon Bacon Curing Co. Ltd.)

Specialists in

**BACON - PORK - COOKED HAM**

**50 FLEET STREET - SWINDON**

**TEL. 22122**

Meet your friends for an enjoyable evening at

## **THE KINGSDOWN ARMS**

(Host A. W. Vann)

**FULLY LICENSED - ARKELL'S BEERS**

**SNACKS - Etc.**

**STRATTON ST. MARGARET**

**Tel. 3283**

## OUR VISITORS—continued

### **JIMMY McILROY (Wing-half)**

On 28th January this year Jimmy took his first stride into soccer management when he agreed to pack up his playing activities with Stoke City and take over the reins with Oldham Athletic. While the Club was floundering in relegation difficulties he decided to make a come-back as a player, so he now has the dual task of player-manager. Has won 55 caps for Northern Ireland.

### **FRANK LARGE (Centre-forward)**

Signed from Carlisle United last Christmas. Has been in two Third Division promotion teams in the last four years. Started out as a wing-half but was converted to centre-forward.

### **STEWART HOLDEN (Full-back)**

Signed from Huddersfield Town. Was discovered by Town in local junior football and has alternated between inside-forward and wing-half, but was late season switched to full-back, and seems to have settled in the new defensive job.

### **PETER MITCHELL (Full-back)**

Became a full-time player in mid-July after playing for the Club as an amateur from the final weeks of 1964-65. Figured at wing-half for Oldham Boys but has since been converted to full-back.

### **JIMMY FRIZZELL (Wing-half)**

Signed from Morton in 1960 and is the longest serving member on the Club books. Formerly at inside-forward, but successfully converted to wing-half.

### **ALAN LAWSON**

Joined Oldham Athletic during the close season of 1964 from Glasgow Celtic. Was out of action for a long period after being injured in the F.A. Cup-tie against West Ham United, but the close season rest has resulted in a complete recovery.

### **IAN WOOD (Centre-forward)**

Started out as a right-back, but soon settled down as centre-forward. He proved himself when Oldham Athletic offered him a League chance in the final game of last season against Queen's Park Rangers, and became a full-timer last month.

### **JIM BOWIE (Inside-forward)**

Coming up for his fourth season in the senior grade having graduated from Scottish Junior football. He was with Arthurlie Juniors during the 1961-62 winter.

### **RON SWAN (Goalkeeper)**

Joined Oldham Athletic during the 1964 break. For the last two years this six-footer shared the goalkeeping spot with Johnny Bolland.

# BRETTS

PET AND GARDEN SUPPLIES

32-33 Commercial Rd.  
Swindon

6 Cromwell St.  
Swindon

## HOLMES & LUCAS

For a complete range of the very latest in radio,  
television and all domestic appliances

Home demonstrations. Top Part Exchanges

**HOLMES & LUCAS, 14 Regent Street Tel. 22526 & 4721**

FOR ALL YOUR ANGLING NEEDS  
CONSULT

### FRANK WOODWARD

Swindon's Fishing Tackle Specialist

**25 HAVELOCK ST., SWINDON**  
PHONE 3879

For Paints of Good Quality

### H. S. HODGES & SONS (SWINDON) LTD.

**CRICKLADE RD., SWINDON**  
PHONE 22422

Dulux, Brolac, Valspar, Wallcharm,  
etc.

### *SOUTHERN LAUNDRY CO. LTD.*

Launderers and Dry Cleaners

**HAYDON ST. - SWINDON**  
TELEPHONE 4161

### COMLEY'S

Modern Music Centre

**26 HAVELOCK ST., SWINDON**

RECORDS - MUSIC - INSTRUMENTS  
Top Twenty 'Pops' always in stock  
and wide selection of Jazz & Classics  
Personal Supervision Phone 3874



# KEY OF THE BOARD

## First Section

- A—Arsenal v. Burnley
- B—Aston Villa v. Manchester United
- C—Blackpool v. Fulham
- D—Chelsea v. Everton
- E—Leicester City v. Stoke City
- F—Liverpool v. Sheffield United
- G—Manchester City v. Nottingham Forest
- H—Sheffield Wednesday v. Leeds United
- I—Southampton v. Newcastle United
- J—Sunderland v. Tottenham Hotspur
- K—West Ham United v. West Bromwich Albion
- L—Blackburn Rovers v. Millwall
- M—Bolton Wanderers v. Northampton Town
- N—Bristol City v. Preston North End
- O—Carlisle United v. Rotherham United
- P—Charlton Athletic v. Plymouth Argyle
- Q—Crystal Palace v. Portsmouth
- R—Derby County v. Hull City
- S—Huddersfield Town v. Birmingham City
- T—Ipswich Town v. Bury

## Second Section

- A—Wolverhampton Wanderers v. Coventry City
- B—Brighton & Hove Albion v. Shrewsbury Town
- C—Doncaster Rovers v. Workington
- D—Grimsby Town v. Leyton Orient
- E—Mansfield Town v. Gillingham
- F—Peterborough United v. Swansea Town
- G—Reading v. Scunthorpe United
- H—Torquay United v. Middlesbrough
- I—Walsall v. Bournemouth & Boscombe Athletic
- J—Watford v. Oxford United
- K—Barrow v. Newport County
- L—Bradford v. Hartlepoons United
- M—Chesterfield v. Aldershot
- N—Crewe Alexandra v. Brentford
- O—Lincoln City v. Luton Town
- P—Notts County v. Bradford City
- Q—Rochdale v. Southend United

## Hatton's Newsagency

A. J. D. & N. J. Woodhouse

Newsagents :: Tobacconists  
Confectioners

Agents for Wessex School of  
Motoring

Booking Agents for Rimes Coaches

6 Regent Circus (near G.P.O.)

Telephone Swindon 22731

## HULFORD MOTORS Ltd.

### SELF DRIVE HIRE

Fleet of 1966 Fords  
Anglias De-Luxe - Cortinas  
De-Luxe - Zephyr 4s.

### SHRIVENHAM ROAD

(200 yards from Football Ground)

Phone 4934

Large Car Park available

For High Class  
Central Heating, Plumbing  
Painting and Decorating  
Electrical Installations  
and Repairs

## NORTH WILTS Sanitary & Heating Co. Ltd.

NEWPORT ST., SWINDON

Phone 5373/4

## FLOODLIGHTING?

# Warnes Installations

BATHURST CORNER, COUNTY RD., SWINDON

Electrical Contractors to the 'S'

WE INSTALLED THIS FLOODLIGHTING

SWINDON TOWN

Downborough

Thomas (2)

Trollope

Smart (4)

Nurse (5)

Rogers (7)

Brown (8)

Penman (9)

Bull

Swindon Colours:

RED SHIRTS, WHITE SHORTS

EVERY FRIDAY 6D. EVERY FRIDAY 6D.

EVERY FRIDAY 6D.

# SWINDON

# ECHO

EVERY FRIDAY 6D. EVERY FRIDAY 6D.

Swindon's 12th Man  
EAST

Blore (11)

Collins (10)

Large (9)

Town

Bowie (6)

Asprey (5)

Knighton (3)

Leeds

Swan

OLIDHAM

# Mills & Merrick

Complete House Furnishing

Furnishing Contractors

16-17 BRIDGE STREET, SWINDON.

G?

# Installations Limited

R, COUNTY RD., SWINDON. Tel. 27291

ical Contractors to the "Town"  
LED THIS FLOODLIGHT SYSTEM

## SWINDON TOWN

Downborough

- (2) Nurse (5) Trollope (3) Harland (6)
- Penman (9) Butler (10) Walker (11)

EVERY FRIDAY 6D. EVERY FRIDAY

## SWINDON

## ECHO

EVERY FRIDAY 6D. EVERY FRIDAY

- (9) Large (9) Towers (8) Bebbington (7)
- Asprey (5) Mcllroy (4)
- on (3) Ledger (2)

Swan

## OLDHAM

# & Merricks Ltd.

ete House Furnishers and  
urnishing Contractors

ET, SWINDON.

Tel: 5365/6

## McILROYS

— RESTAURANT —

Banqueting & Ballroom

for morning coffee,  
luncheon and  
afternoon tea - in  
pleasant surroundings -  
you will find Mcllroys  
are top of the  
'league'. For all  
occasions.

Fully Licensed. Parties and  
Functions catered for.

## Mcllroys Restaurant

64-72 Regent Street

Tel. 5294



THE ALCOHOL FUEL

## COATE GARAGE

REPAIRS - OVERHAULS - WELDING  
SERVICING - REBORING - TYRES

Props. E. V. & W. H. Mattick  
Marlborough Rd., Swindon

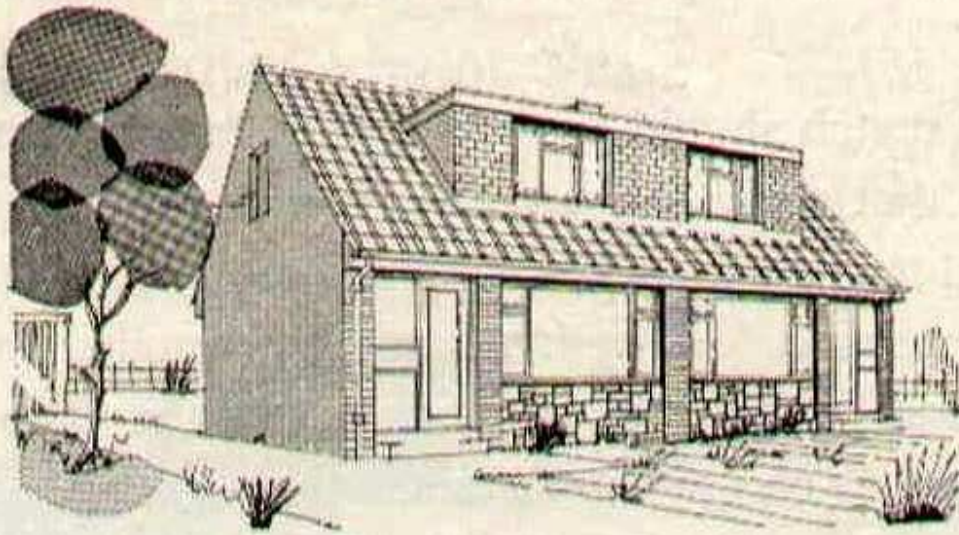
---

# SUPPORTERS *CLUB NOTES*

---

The end of November of each year marks the first real appearance of the annual football disease known as "Cup-tie fever". Patients suffer this complaint at intervals of about three weeks and it occurs right through the winter to spring. Except for only one case each year, the infection proves fatal. The sole survivor is presented with a large cup to mark this remarkable feat of endurance and survival. Various cures are prescribed, in advance usually, but continuing all through the time in question. The only effective cure, however, is a liberal supply of goals — lots and lots of them.

Our first twinge occurred last Saturday at Horsham, in Sussex, and was rapidly cured. I am pleased to report, by three goals supplied by Messrs. Rogers, Nurse and Brown. Supporters who went to Horsham to take the cure tell me that they had the feeling that things were taken a bit too casually. This is to be deprecated. Since the team has settled down, our affairs have prospered, but there can be no compassion in football. Not only is the result of each game important in itself, but a team consistently handing out high scoring punishments to opponents delight their own supporters, gain a more complete confidence in themselves as a team, and achieve an invaluable psychological advantage over future opponents.



## throughout the West

you will find Bradley Estates beautifully situated to meet the requirements of modern living. If you are thinking about a new home and would like to receive full details of our current and planned estates write now to 74 Victoria Road Swindon Wiltshire. Please send me details of

- Green Meadow Estate, Swindon, Wiltshire
- Nythe Estate, Swindon, Wiltshire
- Monkton Park Estate, Chippenham, Wiltshire
- Park Hill Estate, Frome, Somerset
- Milldown Estate, Blandford Forum, Dorset
- Southwick Estate, Trowbridge, Wiltshire
- Estate planned for Poole, Dorset

Name .....

Address .....



# BRADLEYESTATES

## SUPPORTERS' CLUB NOTES—continued

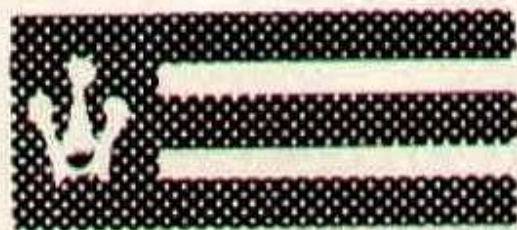
Today's match should provide a stern test for our lads and I do hope that vocal support will be way above average and maintained to the last kick. Oldham is a club making a strong bid for promotion to Division 2 and has applied the cheque-book method to this end. In other words, the Club has been spending money on buying players in the way that a number of our own supporters have been advocating over a considerable period.

I was pleased to note the increased gate last Saturday at the Reserve game against Spurs. The handicap of having several of the more experienced players out of the team was, however, too much for the youngsters, but the will to fight back, and continue playing good football was, I am glad to report, sustained right through the match.

Tonight, the Supporters' Club Football Queen is being chosen in the Supporters' Club Social Club. Despite the attractive prizes arranged, it is disappointing to have to record that the number of entrants is fewer than in previous years. However, thanks to the girls who are prepared to "have a go", we are looking forward to a pleasant evening after the match today. The Swindon Music Centre group is supplying music from 8 p.m. onwards — a welcome return of these popular musicians.

Suppliers to the Swindon Team

**MAY WE SUPPLY YOU?**



**EARLE**

**of Chippenham Limited**

MAIN



DEALERS

**COCKLEBURY ROAD - CHIPPENHAM**

**Telephone 3255**

## SUPPORTERS' CLUB NOTES—continued

A monthly broadsheet is now produced for Social Club members, and is available, free, at the Club. This covers the whole monthly programme of the Club entertainments. Members — and prospective members — might note these for the immediate future.

**EVERY FRIDAY** is **BINGO NIGHT**. Eyes down at 8 p.m.  
**EVERY SATURDAY** is **PARTY NIGHT**.

Music on Saturday, 10th Dec. by **THE STARDUST TRIO**.

Music on Saturday, 17th Dec. by the **SWINDON MUSIC CENTRE**.

**XMAS DRAW PARTY**—Thursday, 15th Dec. Music by **THE DON TRIO**. Draw tickets are still available.

A letter has been passed to me asking how supporters can join the Supporters' Club. Nothing is easier — our Membership Secretary will be found at the Club H.Q. under the Town End Stand at all matches. It is impossible to use these Notes for enrolling Supporters' Club members, as the Membership is recorded and filed on a special cardboard form. I would also remind the enquirer that Club badges can be bought at the same time or later at either of our shops outside the ground.



... not just concrete, but

# Premix

SWINDON AREA OFFICE c/o COLN GRAVEL CO. LTD.  
CLAYDON PIKE LECHLADE GLOS.

PHONE LECHLADE 461/2

Premix—an Amey company—serves 21 counties



## **CLARK BROS. (Swindon) Ltd.**

Building and Civil Engineering Contractors

CONSULT US FOR  
BUILDING AND CIVIL ENGINEERING  
CONSTRUCTION IN ALL ITS PHASES

**STRATTON ROAD**  
**SWINDON**

Telephone  
Swindon 27261

# SWINDON TOWN F.C. SPORTSMEN'S ASSOCIATION

## Week No. 7 (1st Series) Grey Tickets Nov. 21st-26th

Monday	£20	12488	£5	12716
Tuesday	£20	24778	£5	12599
Wednesday	£20	10862	£5	24996
Thursday	£20	22827	£5	26663
Friday	£20	22534	£5	24390
Saturday	£100	23633		

## Week No. 8 (1st Series) Pink Tickets Nov. 28th-Dec. 3rd

Monday	£20	22931	£5	10424
Tuesday	£20	14453	£5	15359
Wednesday	£20	20593	£5	23445
Thursday	£20	23812	£5	25481
Friday	£20	18931	£5	19385
Saturday	£100	10611		

Winning numbers and place of next Draw published in the "Evening Advertiser" each Tuesday.

Enthusiasts are required to form local branches of the Sportsmen's Association in towns and villages with a following of Swindon Town supporters. The purpose of the branches will be to organise various social and fund-raising events, transport for away matches, etc., and generally help to give the "Town" the additional support it needs if it is to grow with the increased population expected.

Please contact the Club Offices.

---

### Robins Flutter 1s. half-time tickets Nov. 19th

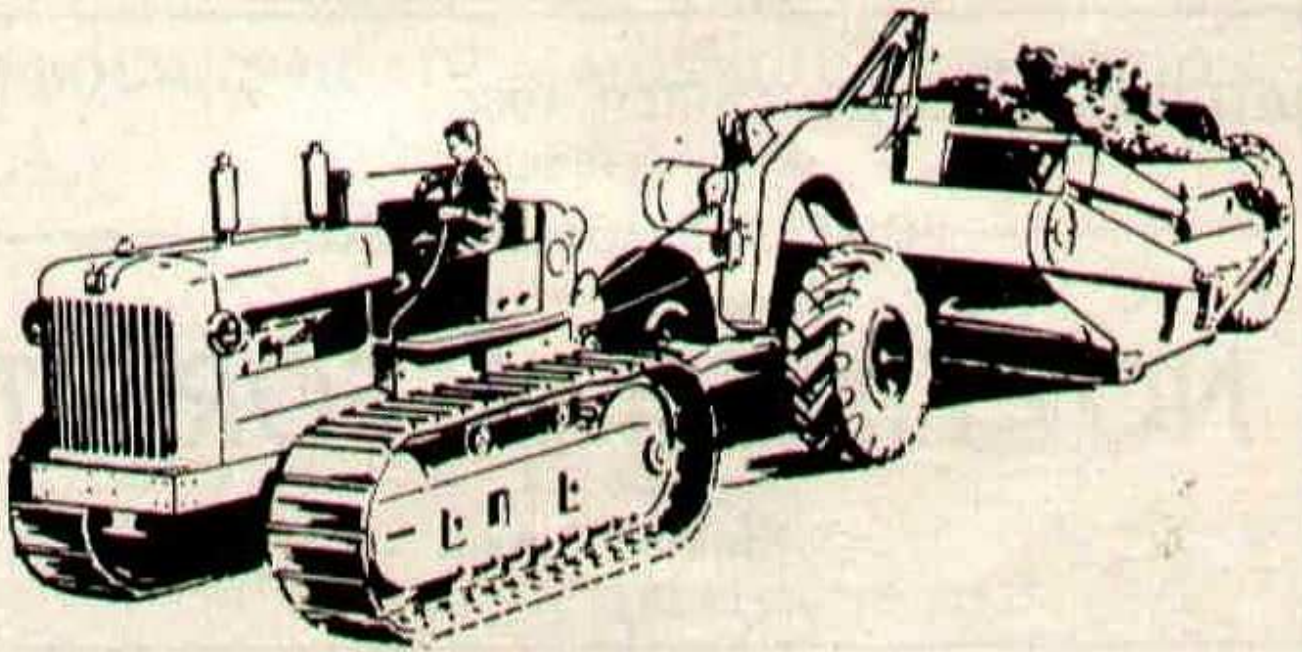
£50	First Prize	11—04—15
£30	Second Prize	05—16—14
£20	Third Prize	04—06—03

**Bonus Prizes for all tickets marked "Bonus Winner".**

**H. HIBBERD LTD.**

**40 NEWPORT STREET, SWINDON**

***Plant Hire Contractors***



**FOR YOUR EARTH-MOVING EQUIPMENT**

**TELEPHONE SWINDON 6125**

# **FORTHCOMING MATCHES**

**MONDAY, 5th DECEMBER, 1966**

**F.A. YOUTH CUP SECOND ROUND**

***ALDERSHOT***

**Kick-off 7.30 p.m.**

---

**SATURDAY, 10th DECEMBER, 1966**

**FOOTBALL COMBINATION**

***NOTTINGHAM FOREST***

**Kick-off 3 p.m.**

---

**SATURDAY, 17th DECEMBER, 1966**

**DIVISION III**

***BRIGHTON & H.A.***

**Kick-off 3 p.m.**

## **Cecil Green**

Artistic Decorations in all its branches

12 Armstrong Street, Swindon, Wilts. Tel. 4593

## **G. A. STREETLY**

**Tobacconist and Confectioner**

**10 BOURNE ROAD - MOREDON - SWINDON**

**Telephone: 4956**

"COAL!"  
"COAL!"  
"COAL!"

## **J. WILMER**

**St. Margaret's Road  
Swindon**

**TELEPHONE 22535**

## **LEESE, ING & CO. LTD.**

Mineral Water and Squash Manufacturers

**LANSDOWN ROAD - SWINDON**

**TELEPHONE 22744**

# DIVISION III

Date	Opponents	Gate	Ground	Result
August 20	BRIGHTON & HOVE ALBION	10,102	(A)	2—2
24	BOURNEMOUTH & B.A. (League Cup)	7,769	(H)	2—1
27	DARLINGTON	10,855	(H)	4—0
September 3	QUEEN'S PARK RANGERS	7,900	(A)	1—3
6	COLCHESTER UNITED	11,600	(H)	1—1
10	WATFORD	9,999	(H)	1—2
13	PORTSMOUTH (League Cup)	7,784	(H)	4—1
17	BRISTOL ROVERS	10,907	(A)	0—3
24	READING	9,064	(A)	1—2
26	COLCHESTER UNITED	7,874	(A)	1—2
October 1	DONCASTER ROVERS	7,780	(H)	0—1
4	DONCASTER ROVERS (League Cup)	9,190	(A)	1—1
8	SHREWSBURY TOWN	7,985	(H)	2—2
11	DONCASTER R. (League Cup Replay)	8,147	(H)	4—2
15	MIDDLESBROUGH	8,126	(A)	0—4
18	WALSALL	9,027	(A)	1—1
22	SWANSEA TOWN	8,638	(H)	4—0
25	W. BROMWICH ALBION (League Cup)	16,254	(H)	0—2
29	BOURNEMOUTH & B.A.	6,333	(A)	4—1
November 5	LEYTON ORIENT	8,996	(H)	5—1
12	GILLINGHAM	7,320	(A)	0—1
19	WORKINGTON	9,497	(H)	3—0
26	(1) HORSHAM	8,000	(A)	3—0
December 3	OLDHAM ATHLETIC		(H)	
10	OXFORD UNITED		(A)	
17	BRIGHTON & HOVE ALBION		(H)	
24	PETERBOROUGH UNITED		(A)	
26	PETERBOROUGH UNITED		(H)	
31	DARLINGTON		(A)	
January 7	(2) ASHFORD TOWN		(H)	
14	WATFORD		(A)	
21	BRISTOL ROVERS		(H)	
28	(3)		( )	
February 4	READING		(H)	
11	DONCASTER ROVERS		(H)	
18	(4) GRIMSBY TOWN		(A)	
25	SHREWSBURY TOWN		(A)	
March 4	MIDDLESBROUGH		(H)	
11	(5) GRIMSBY TOWN		(A)	
14	QUEEN'S PARK RANGERS		(H)	
18	SWANSEA TOWN		(A)	
25	BOURNEMOUTH & B.A.		(H)	
27	TORQUAY UNITED		(A)	
28	TORQUAY UNITED		(H)	
April 1	LEYTON ORIENT		(A)	
8	(6) GILLINGHAM		(H)	
11	MANSFIELD TOWN		(H)	
15	WORKINGTON		(A)	
18	WALSALL		(H)	
22	SCUNTHORPE UNITED		(H)	
24	MANSFIELD TOWN		(A)	
29	(S.F.) OLDHAM ATHLETIC		(A)	
May 6	OXFORD UNITED		(H)	
12	SCUNTHORPE UNITED		(A)	



**British Rail**

## **We can organise your Group Travel—very well too!**

**As a start . . .** you need only ten people to qualify for the Special Group Travel discount (two children count as one adult).

**And to go on with . . .** there are reduced fares for day outings, single and return; for parties making journeys over a period; and for individuals (minimum) travelling to one particular point for a business meeting or conference.

**Ask at your** local station or travel agent for full details.

ESTABLISHED 1923

**DOBELL SHEARMAN**

**& CO. LTD.**

**£10 TYPEWRITERS from £10**

Also full selection new standard and portable typewriters

OFFICE EQUIPMENT

29 High Street & 33 Faringdon Road, Swindon. Tel. 4961/2

The Advertisers in this programme have supported the Club. Will you help us reciprocate by supporting them whenever possible?



**JOHN TROLLOPE**



F. J. ROPER  
Devizes Rd.  
Swindon  
Phone 22341

F. J. ROPER  
Cliftonian  
38 William St.  
Swindon  
Phone 3785

*Swindon's  
Finest*

# **FISH and CHIPS**

**CALL ON  
YOUR  
WAY  
HOME**

Menu

**PLAICE  
HAKE  
COD  
SKATE**

**WE SHALL BE  
WAITING  
TO  
SERVE YOU**

F. J. ROPER  
High St.  
W'otton Bassett

F. J. ROPER  
Cross Hayes  
Malmesbury

## F.A. CUP—SECOND ROUND

# SWINDON TOWN v. ASHFORD TOWN

SATURDAY, 7th JANUARY, 1967

Kick-off 3 p.m.

Stand tickets for this game will be on sale from Wednesday, December 7th.

Season Ticket holders are advised that they should claim their seats not later than Saturday, 31st December, 1966. When claiming their seats, Season Tickets must be produced.

## THE FOOTBALL COMBINATION

Tables of Results to Tuesday, 29th November, 1966. (Not inclusive)

### DIVISION I

	P	W	D	L	F	A	Pts.
Tottenham Hotspur .....	9	7	1	1	30	13	15
Leicester City .....	10	6	1	3	28	20	13
Arsenal .....	7	6	0	1	20	12	12
<b>Swindon Town</b> .....	<b>8</b>	<b>6</b>	<b>0</b>	<b>2</b>	<b>17</b>	<b>12</b>	<b>12</b>
West Ham United .....	8	5	1	2	26	14	11
Crystal Palace .....	9	5	1	3	20	22	11
Peterborough United .....	7	4	1	2	16	15	9
Nottingham Forest .....	9	4	1	4	21	21	9
Plymouth Argyle .....	9	3	2	4	21	18	8
Southampton .....	12	3	2	7	25	24	8
Northampton Town .....	8	3	2	3	18	19	8
Fulham .....	10	3	1	6	20	23	7
Ipswich Town .....	11	3	1	7	16	25	7
Chelsea .....	10	3	1	6	16	26	7
Coventry City .....	7	2	1	4	12	14	5
Gillingham .....	9	1	3	5	16	30	5
Reading .....	9	2	1	6	10	24	5



MY MASTER SAYS THAT  
**MAN'S SECOND BEST FRIEND  
IS A SAVINGS BANK ACCOUNT**

Local Offices  
17 Commercial Road, Swindon.  
6 Maryport Street, Devizes.

**T** RUSTEE  
**S** AVINGS  
**B** ANK

8,000 SEATS FOR SHEFFIELD WEDNESDAY F.C.

6,000 SEATS FOR SHEFFIELD UNITED F.C.

7,000 SEATS FOR ASTON VILLA F.C.

4,000 SEATS FOR PETERBOROUGH AGRICULTURAL SOCIETY

3,000 SEATS FOR OLDHAM F.C.

10,000 SEATS FOR HULL CITY F.C.

**FAST, EFFICIENT SERVICE FROM MARTYN LYNSHAW LTD.**

- LIGHT CONSTRUCTIONAL STEELWORK
- BALUSTRADING AND MOTORWAY FENCING
- ANCILLARY WORK FOR THE BUILDING TRADE



*FAST EFFICIENT SERVICE BY*  
**MARTYN LYNSHAW LIMITED**

Telephone  
21844

**BOUNDARY WORKS - STRATTON ROAD - SWINDON**